

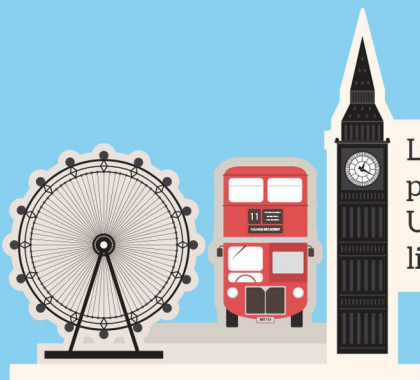
ONLY 5.5% OF MUSLIMS

Only 5.5% of Muslims are members of the professional and managerial classes and are the least likely social group to work in senior professional roles.



46% OF MUSLIMS

46% of Muslims live in the 10% most deprived Local Authority areas of England.



London is home to the highest proportion of Muslims in the UK, with 125,809 Muslims living in Tower Hamlets alone.



TOWER HAMLETS



2.8 MILLION MUSLIMS

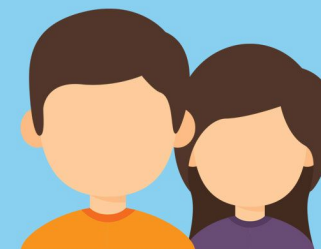
There are 2.8million Muslims in the United Kingdom (4.4% of the population).



MUSLIMS HAVE THE YOUNGEST AGE PROFILE OF ALL RELIGIOUS GROUPS.

48% AGED 24 OR UNDER

48% are aged 24 or under (compared with 31% of the overall population)



33% AGED 15 OR UNDER

33% are aged 15 or under (compared with 19% of the overall population)



Muslims account for 9% of babies and toddlers aged 0-4 years old in England and Wales.

25%

Young British Muslims will have accounted for one quarter of the growth in the UK's working age population between 2008 and 2018.



The Demographics of British Muslims

1. There are 2.8 million Muslims in the United Kingdom (4.4% of the population).

*"Religion in England and Wales 2011," Office for National Statistics, accessed June 07, 2017
<https://www.ons.gov.uk/peoplepopulationandcommunity/culturalidentity/religion/articles/religioninenglandandwales2011/2012-12-11>.*

2. After Christians, Muslims are the largest faith group in the UK.

Ibid

3. Muslims have the youngest age profile of all religious groups.

*"Ethnicity and religion by age," Office for National Statistics, accessed June 07, 2017,
<https://www.ons.gov.uk/aboutus/transparencyandgovernance/freedomofinformationfoi/ethnicityandreligionbyage>.*

a. 33% are aged 15 or under (compared with 19% of the overall population)

b. 48% are aged 24 or under (compared with 31% of the overall population)

*British Muslims in Numbers A Demographic, Socio-economic and Health profile of Muslims in Britain drawing on the 2011 Census," Muslim Council of Britain (MCB), accessed June 07, 2017,
<http://www.mcb.org.uk/muslimstatistics/>.
KS102EW (Age structure) - Nomis - Official Labour Market Statistics, accessed July 03, 2017,
<https://www.nomisweb.co.uk/census/2011/ks102ew>.*

"British Muslims in Numbers A Demographic, Socio-economic and Health profile of Muslims in Britain drawing on the 2011 Census," KS102EW (Age structure) - Nomis - Official Labour Market Statistics

c. Muslims account for 9% of babies and toddlers aged 0-4 years old in England and Wales.

*Ami Sedghi, "Is it true there is a startling rise in the birthrate of British Muslims?," The Guardian, January 10, 2014,
<https://www.theguardian.com/news/datablog/2014/jan/10/rise-british-muslim-birthrate-the-times-census>.
KS102EW (Age structure) - Nomis - Official Labour Market Statistics*

4. Young British Muslims will have accounted for one quarter of the growth in the UK's working age population between 2008 and 2018.

Zamila Bunglawala, Valuing Family, Valuing work: British Muslim Women and the Labour market, report (The London Development Agency, November 2008), 4

5. London is home to the highest proportion of Muslims in the UK, with 125,809 Muslims living in Tower Hamlets alone.

*"User requested data: Annual Population Survey Data for England, Wales and selected Local Authorities showing total population, and those who reported their religion as Muslim for the periods 2011 to 2014," Office for National Statistics, January 26, 2016,
<https://www.ons.gov.uk/employmentandlabourmarket/peopleinwork/employmentandemployeetypes/adhocs/005254annualpopulationandsurveydataforenglandwalesandselectedlocalauthoritiesshowingtotalpopulationandthosewhoreportedtheirreligionasmuslimfortheperiods2011to2014>*

6. The majority of British Muslims reside in inner-city, formerly run-down areas with high levels of housing deprivation, overcrowding and poor housing quality.

*"Muslim Migration to Europe," College of Liberal Arts | University of Minnesota, June 17, 2015,
<https://cla.umn.edu/ihr/news-events/other/muslim-migration-europe>.*

7. 4.6% of Muslims live in the 10% most deprived Local Authority areas of England.

Louise Ridley, "British Muslims Among The Most Deprived In The Country, Finds Landmark Report," The Huffington Post, February 13, 2015, http://www.huffingtonpost.co.uk/2015/02/12/british-muslims-facts_n_6670234.html.

8. 67% of British Muslims are of Asian or Asian-British ethnicity and descend primarily from the Indian sub-continent.

*"Ethnicity and religion by age," Office for National Statistics, accessed June 07, 2017,
<https://www.ons.gov.uk/aboutus/transparencyandgovernance/freedomofinformationfoi/ethnicityandreligionbyage>.*

9. 33.7% of Muslim men work in semi-skilled and unskilled occupations and are more likely to be employed in spheres that provide limited career progression.

*"Review of Evidence in the East of England: Religion or belief," MENTER: East of England Black and Minority Ethnic Network, accessed June 07, 2017,
http://www.mentor.org.uk/sites/default/files/Review_of_Evidence-Religion_or_Belief.PDF.*

10. Only 5.5% of Muslims are members of the professional and managerial classes and are the least likely social group to work in senior professional roles.

"British Muslims in Numbers," Muslim Council of Britain